



ML96  
.B74  
N68  
1888x

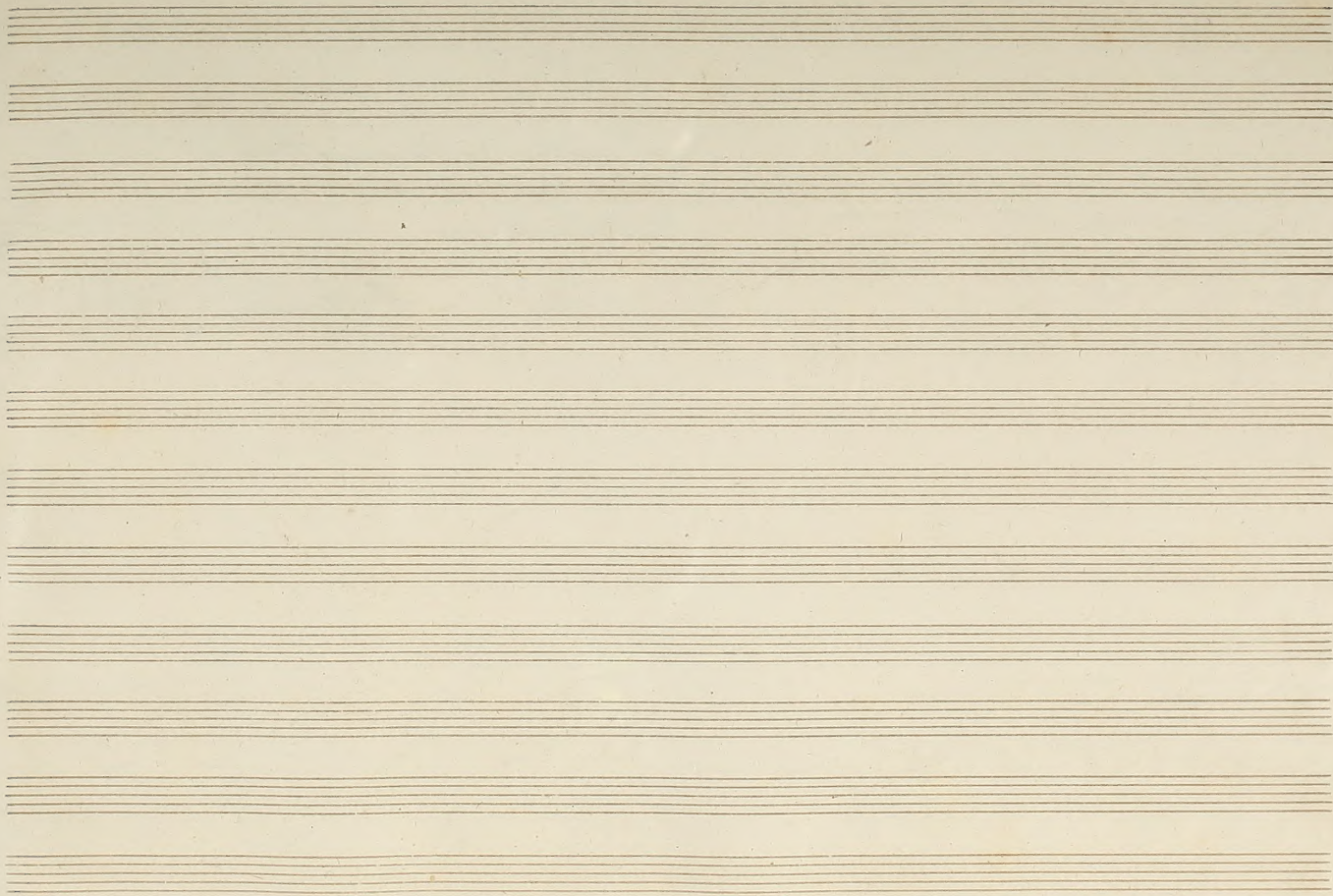
☆☆M



THE PUBLIC LIBRARY OF THE CITY OF BOSTON  
THE ALLEN A. BROWN COLLECTION





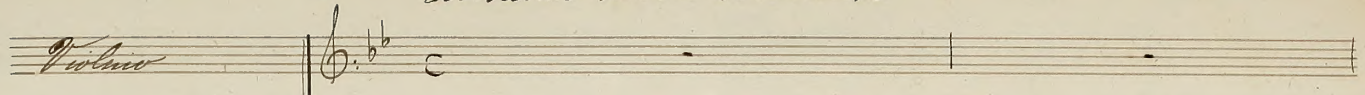


*Al caro amico Domenico Prechia  
dedico l'andante del mio primo  
concerto di trio.*

*J. Bognen*

*Andante molto sostenuto*

*Violino*



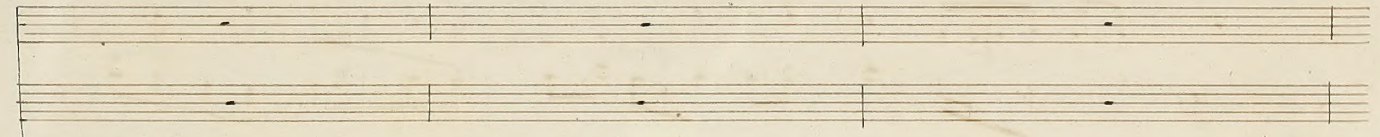
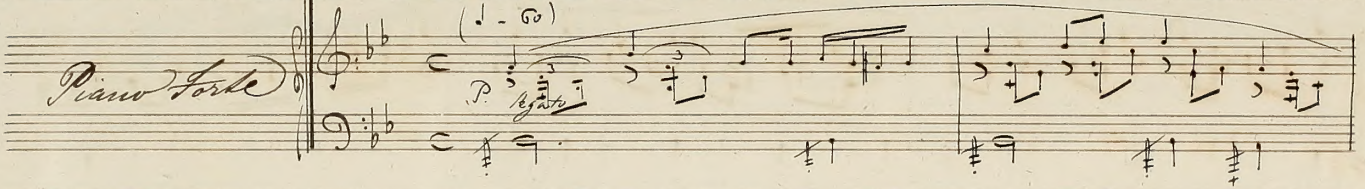
*Violoncello*



*Andante molto sostenuto*

(1. 2.)

*Piano Forte*



Handwritten musical score for the first system, featuring a treble clef and a bass clef. The music consists of a melodic line in the treble and a bass line in the bass. The treble line has several slurs and ties, and the bass line has some chordal textures. The notation is in ink on aged paper.

*P. ed esp.*

Handwritten musical score for the second system, featuring a treble clef and a bass clef. The music consists of a melodic line in the treble and a bass line in the bass. The treble line has several slurs and ties, and the bass line has some chordal textures. The notation is in ink on aged paper.

*P. e legato*

Handwritten musical score for the third system, featuring a treble clef and a bass clef. The music consists of a melodic line in the treble and a bass line in the bass. The treble line has several slurs and ties, and the bass line has some chordal textures. The notation is in ink on aged paper.



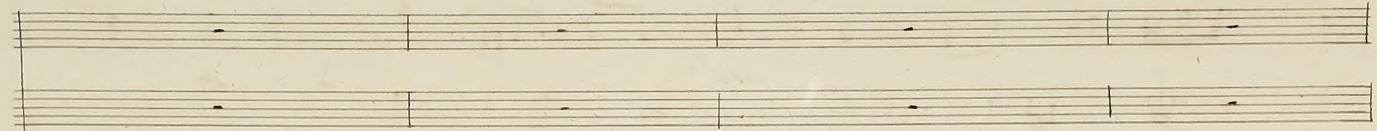
*cres<sup>do</sup>*

*cres<sup>do</sup>*

*cres<sup>do</sup>*

*P. espr<sup>z</sup>*

This image shows a page of handwritten musical notation on aged, yellowed paper. The score is organized into four systems, each consisting of two staves. The notation includes various rhythmic values, slurs, and dynamic markings. The first system features a *cres<sup>do</sup>* marking above the first staff and below the second. The second system has a *cres<sup>do</sup>* marking below the second staff. The third system contains a *P. espr<sup>z</sup>* marking above the second staff. The notation is dense, with many notes and rests, and some staves have additional markings like '8' or '9' below them. The paper shows signs of age, including some staining and discoloration.



Handwritten musical notation on a grand staff. The upper staff contains a melodic line with a large slur over the latter half. The lower staff contains a bass line with several chords. The key signature changes from one sharp (F#) to two sharps (F# and C#). The notation includes various rhythmic values and accidentals.

Handwritten musical notation on a grand staff. The upper staff has a few notes with a dynamic marking *p*. The lower staff contains a bass line with chords. The key signature is two sharps (F# and C#).

Handwritten musical notation on a grand staff. The upper staff contains a melodic line with a large slur. The lower staff contains a bass line with chords. The key signature changes from two sharps (F# and C#) to one sharp (F#). The notation includes dynamic markings *p*, *rit*, and *tempo*.

*cres.<sup>do</sup> e accel.*

*pp. rall.*

*cres.<sup>do</sup> e accel.*

*pp. rall.*

P.

Handwritten musical notation for the first system, featuring a treble clef. The notation includes a series of notes and rests, with dynamic markings such as *stacc.* and *pp*. There are also some markings that look like *sfz* and *pp* in different parts of the system.

Handwritten musical notation for the second system, featuring a bass clef. The notation is dense with many notes, suggesting a complex texture or a series of chords. There are dynamic markings like *pp* and *stacc.* at the beginning.

Handwritten musical notation for the third system, featuring a treble clef. The notation includes notes and rests, with dynamic markings such as *pp* and *cres. molto* appearing towards the end of the system.

Handwritten musical notation for the fourth system, featuring a bass clef. The notation includes notes and rests, with dynamic markings such as *pp* and *cres. molto* appearing towards the end of the system.

Handwritten musical notation on two staves. The top staff features a treble clef and a key signature of one flat (B-flat). The bottom staff features a bass clef. The music includes various notes, rests, and dynamic markings such as *p* (piano) and *f* (forte). The notation is dense and expressive, with many slurs and ties.

Handwritten musical notation on two staves. The top staff features a treble clef and a key signature of one flat. The bottom staff features a bass clef. The music includes various notes, rests, and dynamic markings such as *p* (piano) and *f* (forte). The notation is dense and expressive, with many slurs and ties.

Handwritten musical notation on two staves. The top staff features a treble clef and a key signature of one flat. The bottom staff features a bass clef. The music includes various notes, rests, and dynamic markings such as *p* (piano) and *f* (forte). The notation is dense and expressive, with many slurs and ties.

Handwritten musical notation on two staves. The top staff features a treble clef and a key signature of one flat. The bottom staff features a bass clef. The music includes various notes, rests, and dynamic markings such as *p* (piano) and *f* (forte). The notation is dense and expressive, with many slurs and ties.

*P.*  
poco a poco cres.  
*scusabile*

The first system of handwritten musical notation consists of two staves. The upper staff is in treble clef and contains a melodic line with several slurs and accents. The lower staff is in bass clef and contains a bass line with chords and slurs. The dynamic marking *P.* is at the beginning, and *poco a poco cres.* is written above the first few measures. The word *scusabile* is written in cursive below the bass staff.

*P.*  
poco a poco cres.<sup>to</sup>

The second system of handwritten musical notation consists of two staves. The upper staff continues the melodic line with slurs and accents. The lower staff continues the bass line with chords and slurs. The dynamic marking *P.* is at the beginning, and *poco a poco cres.<sup>to</sup>* is written above the first few measures.

*P.*  
*P.*

The third system of handwritten musical notation consists of two staves. The upper staff continues the melodic line with slurs and accents. The lower staff continues the bass line with chords and slurs. The dynamic marking *P.* is at the beginning, and another *P.* is written below the first few measures.

*P.*  
*P. leggero*

The fourth system of handwritten musical notation consists of two staves. The upper staff continues the melodic line with slurs and accents. The lower staff continues the bass line with chords and slurs. The dynamic marking *P.* is at the beginning, and *P. leggero* is written below the first few measures.

Handwritten musical notation for the first system, consisting of two staves. The notation includes notes, rests, and some slurs, written in a cursive style.

Handwritten musical notation for the second system, featuring a treble clef and a bass clef. The notation includes complex rhythmic patterns, slurs, and some accidentals.

*P. leggero*

Handwritten musical notation for the third system, starting with the instruction *P. leggero*. The notation features a treble clef and a melodic line with slurs and some accidentals.

Handwritten musical notation for the fourth system, featuring a bass clef and complex rhythmic patterns. The notation includes slurs, accidentals, and some markings that appear to be 'S' and 'C'.

*mf.*  
*mf.*

*mf.*  
*mf.*

*cres. molto*

*mf.*  
*mf.*

(c'è un clarinetto che suona nella ca-



*P.*  
*P. dolce*

*P.*  
*Fin. e rall. fino alla fine*

*vera vicina. !)*

Handwritten musical notation on two systems of staves. The notation includes notes, rests, and dynamic markings such as *pp* and *arco*. The first system features a treble clef and a key signature of one sharp (F#). The second system features a bass clef. The notation is dense and appears to be a sketch or a working draft.

Handwritten musical notation on two systems of staves, primarily consisting of rhythmic patterns and rests. The notation includes notes, rests, and dynamic markings such as *pp* and *arco*. A large, stylized scribble is present on the right side of the second system, with the number "1888" written above it. The notation is dense and appears to be a sketch or a working draft.







*p*

*allegro* *a tempo* A - spe - tan - do a ve - der - vi un no - me im - pres - so

*mezzo* Fan - ciu - la io ti per - de - i

*sempre p*

la no - te piom - ba in que - st' al - ma per cui tut - to è fi - ni - to Ma sul mio cor co - me so - pra a u - na tom - ba

*cresc.*

*rit. e dim.*

*a tempo* Il no - me tuo per sem - pre fia scol - pi - to

*pp* *expresso* il no - me tuo per sem - pre fia scol - pi - to

*rit.*

Handwritten musical score on a single staff. The notation includes a piano clef and a bass clef. The score begins with a treble clef and a key signature of one sharp (F#). The first measure is marked with *espress.* and contains a melodic line with accents. The second measure continues the melody. The third measure is marked with *Dim. e rallen.* and features a descending melodic line. The fourth measure continues the descent. The fifth measure is marked with *p* and contains a chord. The sixth measure is marked with *p* and contains a chord with a sharp sign. The seventh measure contains a chord. The eighth measure contains a chord. The score ends with a double bar line and a repeat sign.

21 aprile 1890





Blank musical staff with five lines.

Blank musical staff with five lines.

Blank musical staff with five lines.

Blank musical staff with five lines.

Blank musical staff with five lines.

Blank musical staff with five lines.

Blank musical staff with five lines.

Blank musical staff with five lines.

Blank musical staff with five lines.

Blank musical staff with five lines.

Blank musical staff with five lines.

Blank musical staff with five lines.

\_\_\_\_\_

\_\_\_\_\_

\_\_\_\_\_

\_\_\_\_\_

\_\_\_\_\_

\_\_\_\_\_

\_\_\_\_\_

\_\_\_\_\_

\_\_\_\_\_

\_\_\_\_\_

\_\_\_\_\_

\_\_\_\_\_

[The page contains approximately 15 horizontal lines of extremely faint, illegible text. The lines are evenly spaced and run across the width of the page. No specific words or phrases can be discerned.]

1. The first part of the document discusses the importance of maintaining accurate records of all transactions and activities. It emphasizes the need for transparency and accountability in financial reporting.

2. The second part of the document outlines the various methods and techniques used to collect and analyze data. It highlights the importance of using reliable sources and ensuring the accuracy of the information gathered.

3. The third part of the document focuses on the interpretation and analysis of the collected data. It discusses the various statistical tools and techniques used to draw meaningful conclusions from the data.

4. The fourth part of the document discusses the importance of communication and reporting. It emphasizes the need for clear and concise communication of the findings and conclusions to the relevant stakeholders.

5. The fifth part of the document discusses the importance of ethical considerations in the research process. It highlights the need for researchers to adhere to ethical guidelines and ensure the integrity of the research.

6. The sixth part of the document discusses the importance of ongoing monitoring and evaluation. It emphasizes the need for researchers to regularly assess the progress of their research and make adjustments as needed.

7. The seventh part of the document discusses the importance of collaboration and teamwork. It highlights the need for researchers to work together and share their knowledge and resources.

8. The eighth part of the document discusses the importance of staying up-to-date with the latest research and developments in the field. It emphasizes the need for researchers to engage in continuous learning and professional development.

9. The ninth part of the document discusses the importance of maintaining a high level of accuracy and precision in all aspects of the research process. It emphasizes the need for researchers to double-check their work and ensure the reliability of their findings.

10. The tenth part of the document discusses the importance of maintaining a clear and organized record of all research activities. It emphasizes the need for researchers to keep detailed notes and maintain a clear timeline of their work.

11. The eleventh part of the document discusses the importance of maintaining a high level of confidentiality and security of all research data. It emphasizes the need for researchers to implement appropriate security measures to protect their work.

12. The twelfth part of the document discusses the importance of maintaining a high level of professionalism and integrity in all aspects of the research process. It emphasizes the need for researchers to adhere to the highest standards of ethical and professional conduct.

